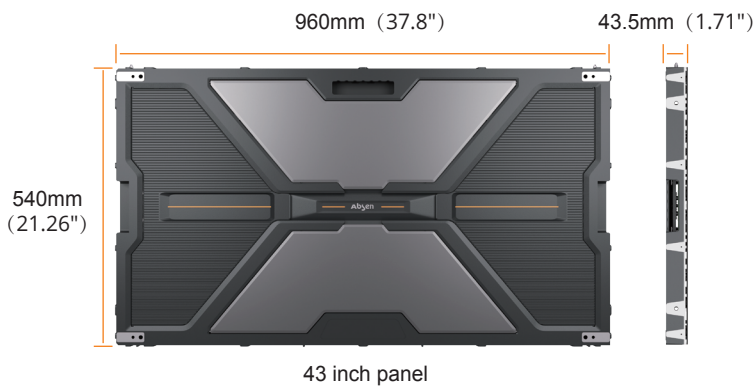


# NX Series

Unparalleled visual experience.



## Ultra-thin and lightweight



**16:9**  
Aspect ratio

**43.5mm 1.71"**  
Ultra-thin design

**20kg/m<sup>2</sup> 44lbs/m<sup>2</sup>**  
Ultra-lightweight

Items	NX1.2	NX1.5	NX1.8	NX2.5
Panel resolution	768*432	640*360	512*288	384*216
4K display	5*5pcs	6*6pcs	8*8pcs	10*10pcs
8K display	10*10pcs	12*12pcs	15*15pcs	20*20pcs

## Ultimate display performance



• Corporate, mall, chain store, transportation hub, etc

- 800nits brightness version
- A5C+ color calibration technology
- High grayscale at low brightness
- Up to 7680Hz high refresh rate
- Remote monitoring and centralized management
- TÜV Rheinland low blue light certification

## ◀ N-in-1 small panel

Flexible N-in-1 small panel, enhancing project dimension compatibility



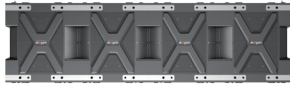
2-in-1 small panel



3-in-1 small panel

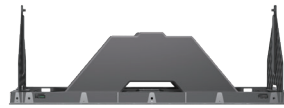


4-in-1 small panel

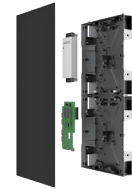


Horizontal 4-in-1 small panel

## ◀ Installation and maintenance



Rear maintenance of large panel



Front maintenance of small panel

- Rotary clamshell design for easy rear maintenance
- Front/rear maintenance of module, PSU, receiving card, etc.
- Supports hanging, wall-mounting and stacking installation
- Precise floating connector for bright and dark lines adjustment
- X/Y/Z axis alignment for flatness adjustment between panels



- Concave splicing with small panels



- 90° seamless L-shape splicing



- Cube

## ◀ Product specification

Parameters	NX1.2	NX1.5	NX1.8	NX2.5
LED type	Black SMD1010	Black SMD1212	Black SMD1515	Black SMD1515
Pixel pitch (mm)	1.2	1.5	1.875	2.5
Panel dimensions (W*H*D, mm)	960x540x43.5mm(37.80x21.26x1.71") / 960x270x43.5(37.80x10.63x1.71") / 240x540x43.5(10.63x21.26x1.71") / 240x810x43.5(10.63x31.89x1.71") / 240x1080x43.5(10.63x42.52x1.71")			
Brightness (nit)	600	800	800	800
Refresh rate (Hz)	3840	7680	7680	7680
Grayscale (bit)	14	16	16	16
Contrast ratio	3500:1	4000:1	4000:1	4500:1
Color temperature (K)	6500	6500	6500	6500
Viewing angle (H/V, °)	140/120	160/160	160/160	160/160
Drive mode	1/54	1/45	1/36	1/27
AC operating voltage (V)	100~240	100~240	100~240	100~240
Power consumption (max./avg., W/m <sup>2</sup> )	420/140	420/140	420/140	420/140
IP Rating (Front/Rear)	IP40/IP21	IP40/IP21	IP40/IP21	IP40/IP21
Certification	FCC, ETL, CE, RoHS, CCC, TUV			

Note:

1. The NX1.2 product brightness is 600nits and the refresh rate is 3840Hz.
2. Provides optional dual backup version to ensure continuous transmission of signal and power supply.
3. Small panel adopts rotary clamshell design as well and support rear maintenance of PSU and receiving card.
4. Z-axis alignment function is only available for ground stacking installation.

**Absen**

www.usabsen.com  
info@usabsen.com

**HQ Office**  
7120 Lake Ellenor Drive  
Orlando, FL 32809  
407.203.8870

**Service Center & Warehouse**  
7307 Presidents Drive  
Orlando, FL 32809  
866-872-2736

Twitter: @Absen\_Inc  
 Facebook: @AbsenInc  
 LinkedIn: @AbsenInc  
 IG: @absen\_inc