

## Acclaim Pro Series

- Pixel pitch range of 1.27/1.58mm
- Corporate, mall, chain store, transportation hub, etc
- Native 16:9, 27.5". Pixel to pixel 4K/FHD resolution
- 4 in 1 integrated packaging
- Front maintenance of module, PSU, etc



Parameters	A2712 Pro	A2715 Pro
Pixel pitch (mm)	1.27	1.58
LED type	Black SMD1515	Black SMD2121
Brightness (nit)	600	600
Panel dimensions (WxHxD)	610x343x49mm(24.02x13.50x1.93")	

## Acclaim Plus Series

- Pixel pitch range of 1.27mm – 2.54mm
- Corporate, mall, chain store, transportation hub, etc
- Native 16:9, 27.5". Pixel to pixel 4K/HD resolution
- A5C+ calibration technology for better display uniformity
- Front maintenance of module, PSU, etc



Parameters	A2712 Plus	A2715 Plus	A2719 Plus	A2725 Plus
Pixel pitch (mm)	1.27	1.58	1.90	2.54
LED type	Black SMD 1010	Black SMD 1010	Black SMD 1515	Black SMD 2121
Brightness (nit)	600	600	800	1000
Panel dimensions (WxHxD)	610x343x49mm(24.02x13.50x1.93")			

## NX Series

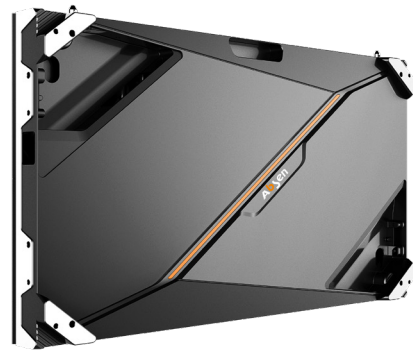
- Pixel pitch range of 1.5mm – 3.75mm
- Corporate, mall, chain store, transportation hub, etc
- Native 16:9, 27.5". Superior 4K/8K visual experience
- 16bits high grayscale and fine image
- Front/rear maintenance of module, PSU, receiving card, etc



Parameters	<b>NX1.5</b>	<b>NX1.8</b> Normal	<b>NX1.8</b> High brightness	<b>NX2.5</b> Normal	<b>NX2.5</b> High brightness	<b>NX3.7</b> Normal	<b>NX3.7</b> High brightness
Pixel pitch (mm)	1.5	1.87	1.87	2.5	2.5	3.75	3.75
LED type	SMD1212	SMD1515	SMD1515	SMD1515	SMD1515	SMD1515	SMD1515
Brightness (nit)	800	800	1500	800	1500	800	1500
Panel dimensions (WxHxD)	960x540x43.5mm(37.80x21.26x1.71")/ 240x540x43.5mm(9.45x21.26x1.71")						

## KL II Series

- Pixel pitch range of 1.25mm – 2.5mm
- Corporate, mall, education, transportation hub, etc
- n^2 panels can be spliced into 2K, 4K or 8K 16:9 screen
- HFR+ mode for capturing the best moments
- Front maintenance of module, receiving card, etc



Parameters	<b>KL1.2 II</b>	<b>KL1.5 II</b>	<b>KL1.8 II</b>	<b>KL2.5 II</b>
Pixel pitch (mm)	1.25	1.53	1.86	2.5
LED type	Black SMD1010	Black SMD1212	Black SMD1515	Black SMD1515
Brightness (nit)	800	800	800	600
Panel dimensions (WxHxD)	640x360x65mm(25.20x14.17x2.56")			