

Polaris V2 Series

Mainstream Indoor & Outdoor Rental Solution



HDR10



Excellent performance



Creative connection



Ultimate user experience

◀ Indoor Brilliant Display Effects

- 1.9, 2.5, 2.9, 3.9mm pixel pitch
- Up to 1500nits high brightness
- Up to 16bit grayscale
- All products are available in 500(W)x500(H)x78(D)mm dimensions
- PL2.9 Plus V2 and PL3.9 Plus V2 are also available in 500(W)x1000(H)x78(D)mm size
- PL2.5 XR V2 and PL2.5 Pro V2 feature UltraBlack technology to reduce reflections and improve contrast
- Narrow pixel pitch products(PP≤2.5mm) incorporate automatic edge protection on each corner



500X1000mm
(19.69x39.37")

500X500mm
(19.69x19.69")

◀ Outdoor Stunning Performance

- 2.9, 3.9, 4.8mm pixel pitch
- Up to 4500nits brightness, 3840 refresh rate
- 500(W)x500(H)x78(D)mm and 500(W)x1000(H)x78(D)mm panel dimensions

- 500x500mm and 500x1000mm panels can be connected vertically
- Optional wind-bracing systems available for 500x1000mm panels

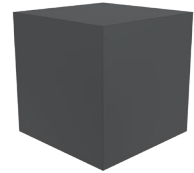
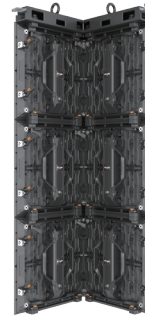
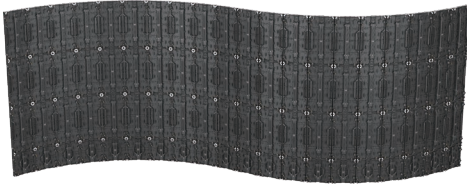
◀ Installation and Maintenance

- Magnetic automatic connection design, making the installation safer
- Auto-lock system for fast and easy one-man installation
- Auto-eject system enables convenient disconnection of panels
- Equipped with safety ropes to prevent the modules from accidentally falling
- Supports front and rear maintenance of modules and power box without tools



◀ Curved Connection and Creative Cube

- Supports curve connection from -7.5° convex to +10° concave (2.5° per unit)
- The 500(W)x500(H)mm edge-cutting version panels were developed to build cube-shaped displays



◀ Product Specification

| Parameters | PL2.5 XR V2 | PL2.5 Pro V2 | PL2.9 Pro V2 | PL3.9 Pro V2 | PL4.8 Pro V2 | PL1.9 Plus V2 | PL2.5 Plus V2 | PL2.9 Plus V2 | PL3.9 Plus V2 | PL2.9W Plus V2 | PL3.9W Plus V2 | PL4.8W Plus V2 |
|--|--------------------------------|--|---|--------------------|--------------------|--------------------------------|---------------|---|--------------------|-----------------------------|--------------------|--------------------|
| Control system | Brompton | Brompton/ NovaStar | NovaStar | | | | | | | | | |
| LED type | Black SMD1515 | | Black SMD 3in1 SMD 1515 | Black SMD1921 | | Black SMD1212 | Black SMD1515 | | SMD2121 | SMD1515 | SMD1921 | |
| Pixel pitch (mm) | 2.5 | 2.5 | 2.97 | 3.9 | 4.8 | 1.95 | 2.5 | 2.97 | 3.9 | 2.97 | 3.9 | 4.8 |
| Panel dimensions (WxHxD, mm) | 500x500x78 (19.69x19.69x3.07") | | 500x500x78 (19.69x19.69x3.07") 500x1000x78 (19.69x39.37x3.07") | | | 500x500x78 (19.69x19.69x3.07") | | 500x500x78 (19.69x19.69x3.07") 500x1000x78 (19.69x39.37x3.07") | | | | |
| Panel resolution | 200x200 | 200x200 | 168x168 168x336 | 128x128 128x256 | 104x104 104x208 | 256x256 | 200x200 | 168x168 168x336 | 128x128 128x256 | 168x168 168x336 | 128x128 128x256 | 104x104 104x208 |
| Panel weight (kg) | 7.8 (17.20lbs) | | 8 (17.64lbs)/ 13 (28.66lbs) | | | 7.8 (17.20lbs) | | 7.8 (17.20lbs)/ 12.5 (27.56lbs) | | 8 (17.64lbs)/ 13 (28.66lbs) | | |
| Panel material | Die casting aluminum | | | | | | | | | | | |
| Module size (WxH, mm) | 250x250 (9.84x9.84") | | | | | | | | | | | |
| Brightness (nit) | 1500 | 1500 | 3000 | 4500 | 4500 | 1000 | 1200 | 1000 | 1000 | 4000 | 4500 | 4500 |
| Refresh rate (Hz) | 7680 | 7680 | 7680 | 7680 | 7680 | 7680 | 7680 | 7680 | 7680 | 7680 | 7680 | 7680 |
| Grayscale (bit) | 16 | 15 | 15 | 16 | 16 | 16 | 15 | 15 | 16 | 15 | 16 | 16 |
| Contrast ratio | 8800:1 | 8800:1 | 5000:1 | 7200:1 | 7200:1 | 5500:1 | 7000:1 | 7000:1 | 7400:1 | 4000:1 | 4500:1 | 4500:1 |
| Color temperature (K) | 6500 | | | | | | | | | | | |
| Viewing angle (H/V, °) | 160/140 | 160/140 | 160/160 | 140/120 | 120/110 | 160/140 | 140/140 | 140/140 | 140/140 | 140/120 | 140/120 | 140/120 |
| Drive mode | 1/8 | 1/20 | 1/14 | 1/8 | 1/7 | 1/16 | 1/20 | 1/21 | 1/16 | 1/14 | 1/8 | 1/7 |
| AC operating voltage(V) | 100~240 | | | | | | | | | | | |
| Power consumption (max./avg., W/m²) | 740/247 | 680/230(Brompton) 720/240(NovaStar) | 610/204 | 800/267 | 800/267 | 700/235 | 640/215 | 560/187 | 560/187 | 720/240 | 600/200 | 600/200 |
| IP rating | IP40/IP21 | IP40/IP21 | IP65/IP54 | IP65/IP54 | IP65/IP54 | IP40/IP21 | IP40/IP21 | IP40/IP21 | IP40/IP21 | IP65/IP54 | IP65/IP54 | IP65/IP54 |
| Certification | FCC, ETL, CE, RoHS | | | FCC, ETL, CE, RoHS | | | | | | | | |



HQ Office
7120 Lake Ellenor Dr Orlando, FL 32809
407.203.8870 info@usabsen.com
www.usabsen.com

East Service Center&Warehouse
7307 Presidents Drive, Orlando, FL 32809
West Service Center & Showroom
20311 Valley Blvd Suite J, Walnut, CA 91789

Twitter: @Absen_Inc
 Facebook: @AbsenInc
 LinkedIn: @AbsenInc
 IG: @absen_inc